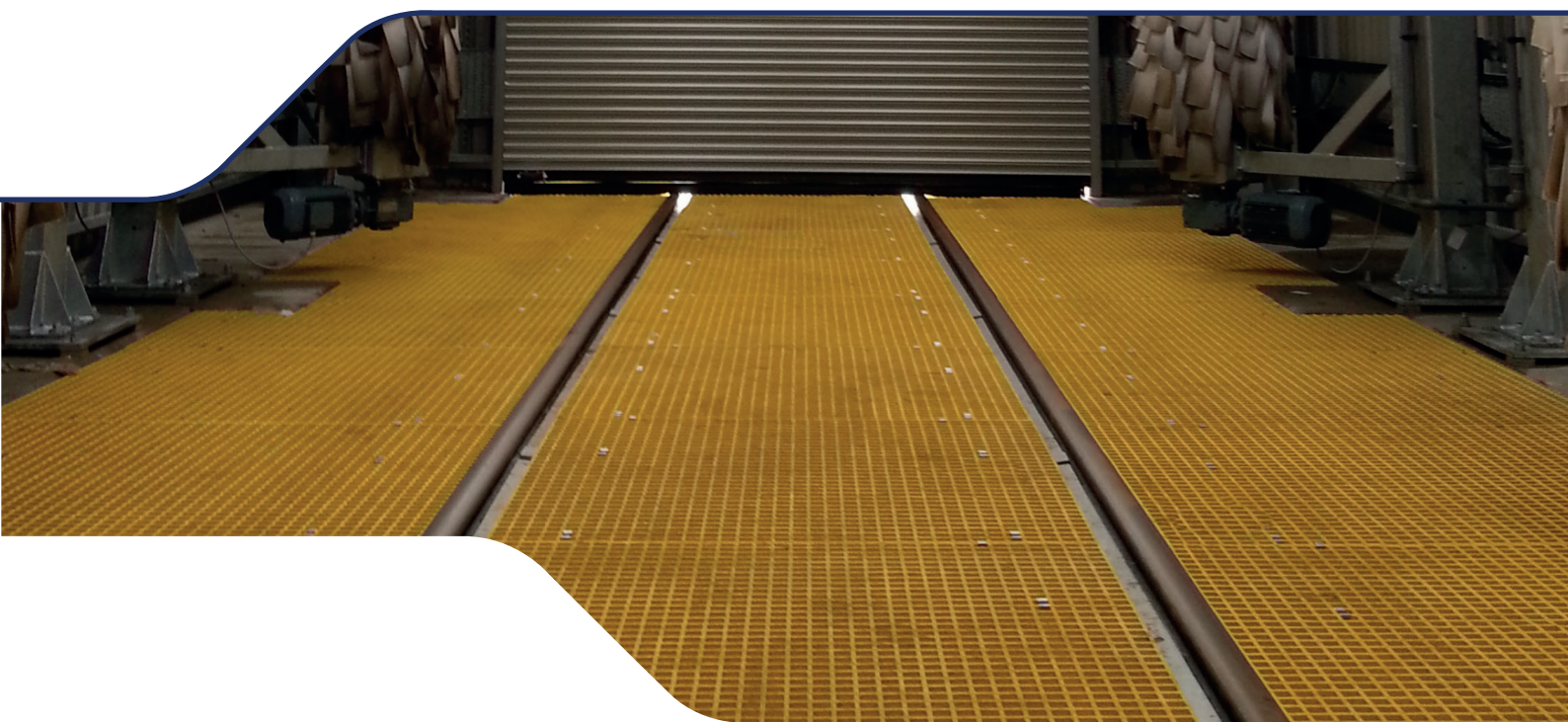


# TrackPan

by Unipart Rail

Designed and engineered to protect the environment from contamination caused by spillage and leaks on the rail network



Quick and simple installation

Installed with no disturbance to existing track

Reduces the possibility of spillages

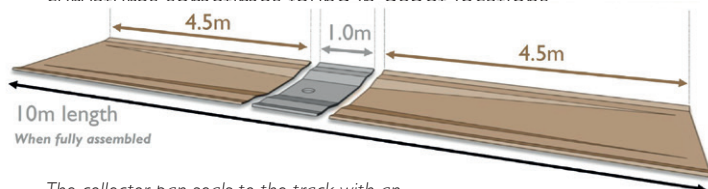
Reduced ballast cleaning costs

The Unipart Rail Track Pan system is designed and engineered to protect the environment from contamination caused by spillage and leaks on the rail network.

**Using Track Pan significantly reduces the risk of costly clean-up and regulatory fines.**

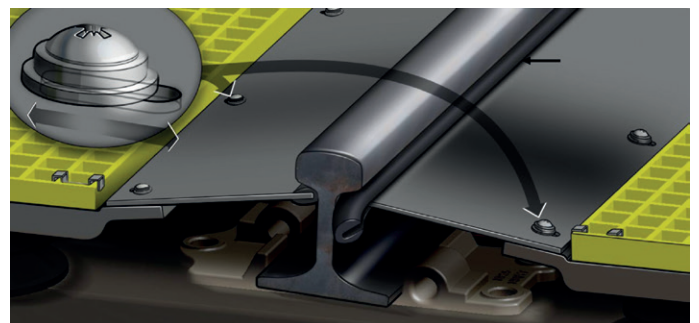
The Track Pan collector system is modular and fits into existing track without the need to lift or modify the track. A single track pan module is 10m in length. The core components comprise two 4.5 metre long sloping sections and a central 1m long collector section, moulded from durable GRP. Adjustable pads securely support the pan.

The track pan width fits within a range of larger track gauges typical in international heavy and light rail systems. The gap between the pan and inner face of the rail allows for the slight curvatures sometimes found in depot locations.



The collector pan seals to the track with an adjustable plate and rubber strip.

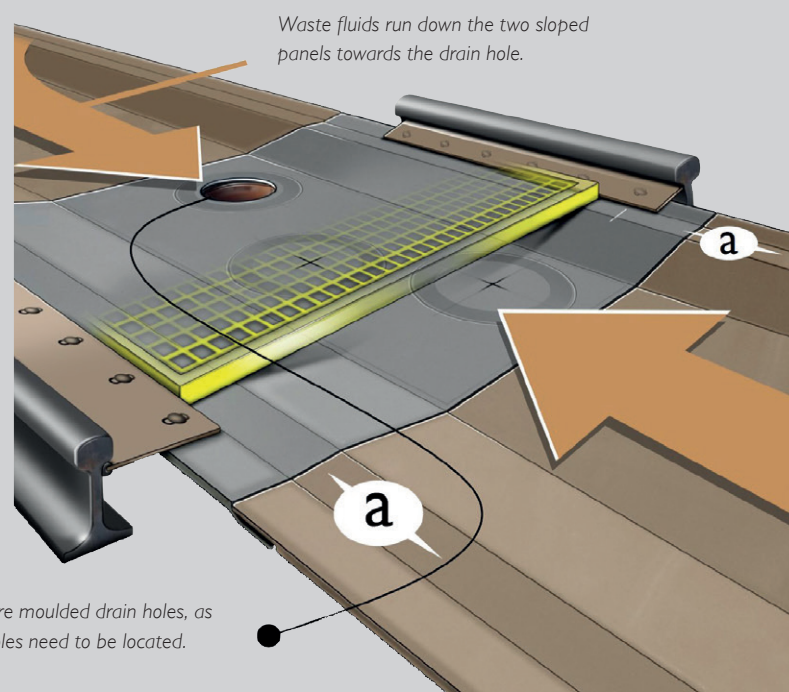
Adjustable design allows for different international track gauges.



Setup options allow for enhanced spillage collection, or enhanced access for track inspection, according to the track requirements.

The carefully designed cross section of the slope and collector panels provides drainage for fluids, as well as a stable, cost effective platform for walking over rails in the depot area, avoiding the risk of slips and falls walking over greasy sleepers or loose ballast.

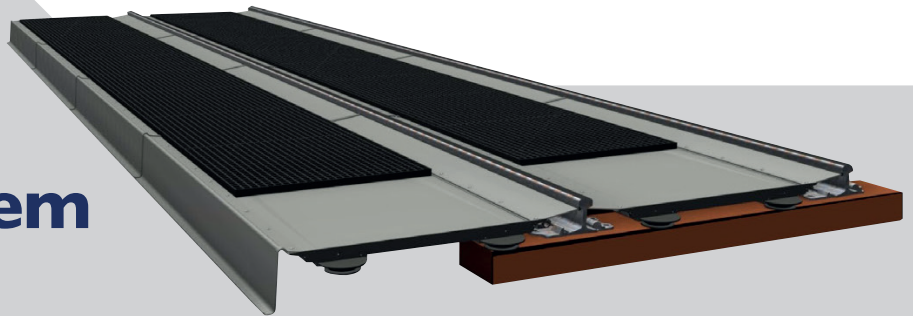
Throughout the 10m length, the sloping and collector panels have a perfectly flat 'shoulder' section (marked 'a' on the diagram opposite) which provides, in conjunction with the mountings below, a reliably level surface to attach the easily cleaned mesh structure.



The central collector panel does not have pre moulded drain holes, as the sleeper spacing below defines where holes need to be located.



# Unipart Rail Track Pan system cleans up!



**Not only can accidental spills in railway facilities cause enormous harm to the environment, they can also pose long-term health hazards and possible damage to the railway infrastructure. In addition to the effects of spill and contamination the costs and reputation damage caused by such spills can be very expensive and in some cases irrecoverable.**

Even when care and attention is taken, accidental spills can still occur. This coupled with general leakage from rolling stock can be very difficult to resolve.

The Track Pan system manufactured by Unipart Rail is considered the best available technology offering protection from spills by collecting fluids and substances and then transferring them to a proper waste treatment system.

## Adaptable Modular System

All assembly hardware is supplied. The pans simply bolt down to the existing railway sleepers. It can be put into service within a few hours of delivery and if necessary can be relocated to another location if depot operations change. Each unit is manufactured to exacting standards provide the maximum self-containing capacity whilst adhering within railway clearance standards.

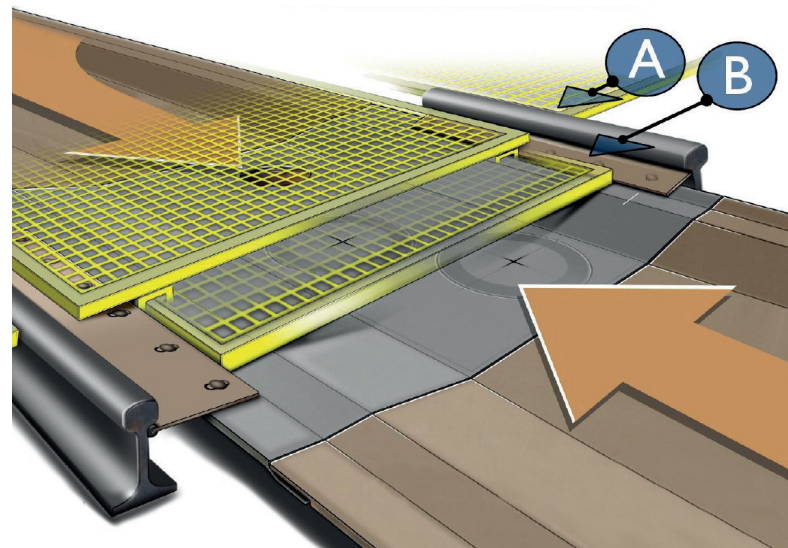
It is a modular system easily allowing additional sections to be added or reconfigured, if a section becomes damaged for any reason, its construction means that only the damaged sections need to be replaced.

Installations on descending gradients are easily undertaken due to the easy to adjust mounting feet design. Installations around curves are also not a problem with all pan sections fitting simply around all possible track curvatures with very little modification. There is no effect to rail joints and allows quick access to the ballast and infrastructure beneath the pan therefore not affecting track inspection procedures.

Installation can be carried out by one of national network's principal contractor system installers.

**A.** Walkway grating mounted on support bars for enhanced fluid collection and smooth tramway-style surface.

**B.** Walkway grating mounted to allow for easier removal of adjustable panels for locations where regular track inspection is a priority.



Track Pan installed at Perth Station as part of a carriage washing facility.

## About Unipart

The Unipart Group is a leading UK manufacturer, full service logistics provider and consultant in operational excellence. Operating across a range of market sectors, including automotive, manufacturing, mobile telecoms, rail, retail and technology, Unipart offers a breadth of services to a wide range of blue chip clients internationally.

### Unipart Group Australia

111-113 Newton Road  
Wetherill Park NSW 2164  
Tel: +61 (0) 2 8787 5910  
Fax: +61 (0) 2 8787 5951  
email: [uga.enquiries@unipart.com](mailto:uga.enquiries@unipart.com)



Visit [www.unipart.com.au](http://www.unipart.com.au) for details  
of our Worldwide Regional Offices